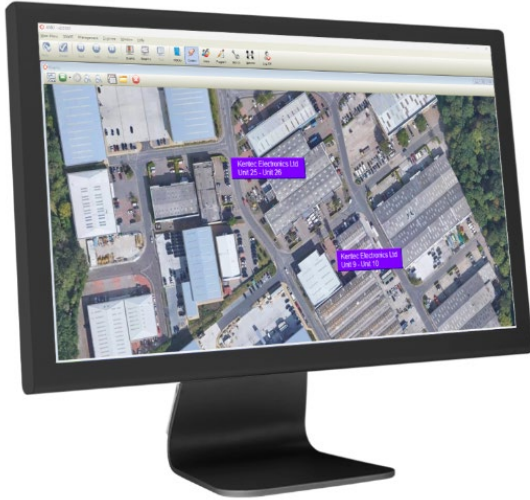


AMX Graphics Software



Standard Features:

- Versatile Graphical Software for Hochiki Fire Alarm Systems
- Provides Full Control of the Fire System
- Interactive Graphics for User Control
- Create Custom Control Buttons
- Supports .bmp or .jpg Map Images
- Configurable Event Priority
- Extensive History Archive
- Up to 2,000 Users with Unique Profiles
- Context-Sensitive Help Menu
- Day, Night, and Holiday Schedules
- Multiple Graphics per Event and Zoom In/Out
- Selectable Sound for Each Event Type
- Text Instructions Provided with Each Event
- Support for the Latitude and FireNET Plus Fire Alarm Control Panels

Few situations are more urgent than a rapidly growing fire. Life-safety is critically important and providing accurate and easy to understand information can mean the difference between safety and tragedy.

Introducing AMX Graphical Fire Management software, a powerful and sophisticated graphical software solution that quickly provides complete information from the fire alarm system in an easy-to-understand, visual format. AMX automatically displays maps and specific instructions for first responders and building authorities. AMX stores a complete record of all system events, including fire alarms, system resets, and other user activity. Up to 32,000 events per day can be stored, with no limit on how long these records can be kept. Event type prioritization allows the system to be designed so that the important events receive the highest priority. These and many other powerful features make AMX the solution you need to complete your Hochiki fire alarm system solution.

A Media Gateway module is required to allow a Latitude panel to interface with the AMX software. A Media Gateway can be ordered as an option on a Latitude fire panel or it may be ordered separately. Only one Media Gateway is required per network of Latitude fire panels.

A programming cable and USB-to-Serial converter will be required to allow the FireNET Plus panel to interface with the AMX software. Installations requiring extended lengths for a PC connection, up to 3200ft, will require use of the S572HA converter package.

Specifications subject to change without notice.

AMX Graphics Software

PC Specifications:

	Minimum:	Recommended:
PC Processor:	Pentium 5 or better	Core i5 or better
Operating System:	Windows 10 Pro	Windows 10 Pro or Later
Memory:	8 GB	16 GB
Disk Space:	320GB SSD	500GB SSD
Ports: USB / LAN (Minimum):	4-6 USB / 1 LAN	4-6 USB / 1 LAN
Monitor Resolution:	1920 x 1080	1920 x 1080
Keyboard / Mouse:	Wired Keyboard & Mouse	Wireless Keyboard & Mouse
Speakers:	Integrated or Third Party	Integrated or Third Party

Software Specifications:

User Profiles:	Up to 2,000
Graphics Pages:	Up to 32,000
Text Pages:	Up to 2,129,698,800
Graphics Resolution:	Minimum, 1024 x 768
Graphics File Format:	JPG, BMP, WMF
Sound File Format:	WAV files
History Log Capacity:	Up to 32,000 events per day

AMX packages are sold based on the total number of nodes in the network.

A Latitude network node count will include the Latitude fire alarm control units and Vision network annunciators.

Part Numbers:

HA Part #	Model	Description
0101-04510	AMT11000001	AMX Graphics System, Latitude, Single Node Package
0101-04520	AMT21000001	AMX Graphics System, Latitude & Vision, 2 to 4 Nodes Package
0101-04530	AMT31000001	AMX Graphics System, Latitude & Vision, 5 to 24 Node Package
0101-04540	AMT41000001	AMX Graphics System, Latitude & Vision, 25 to 127 Node Package
0101-01280	Media Gateway	S788 Latitude Media Gateway Module (Required to transfer fire panel event data to AMX)
0100-04510	AMS11000001	AMX Graphics System, FireNET Plus, Single Node Package
0100-04520	AMS21000001	AMX Graphics System, FireNET Plus, 2 to 4 Node Package
0100-04530	AMS31000001	AMX Graphics System, FireNET Plus, 5 to 24 Node Package
0100-04540	AMS41000001	AMX Graphics System, FireNET Plus, 25 to 64 Node Package
0100-03220	FN-X187	Standard Programming Cable (Transfers event data to AMX (Included with S752)
0100-13810	S752HA	Isolated RS232 to RS485 USB Converter and FACP connection cable (Required)